



Instructions for connecting to the FDIBA Wireless Network (Windows 7)



In order to connect, you need your username and password, as well as the FDIBA Root Certificate which you need to install on your laptop.

1) Root Certificate Installation

To install the certificate, please perform the following steps:

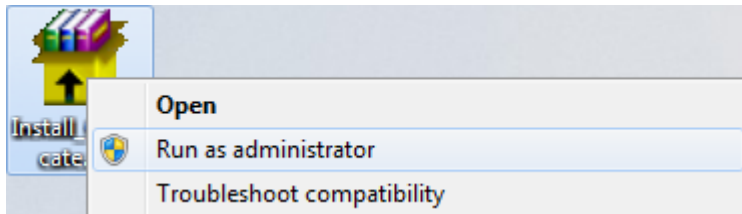
1. Log on to a desktop computer in one of the PC rooms using your username and password and use Windows Explorer to navigate to the location **X:\Wireless Network**.

Note: You can also download the certificate outside the FDIBA network using the URL:

<http://fdiba.tu-sofia.bg/downloads/Install Certificate.exe>



2. Copy the file **Install_Certificate.exe** to a USB Flash disk or a diskette.
3. Transfer the file to your laptop.
4. Right-Click the executable file and select **Run as administrator**

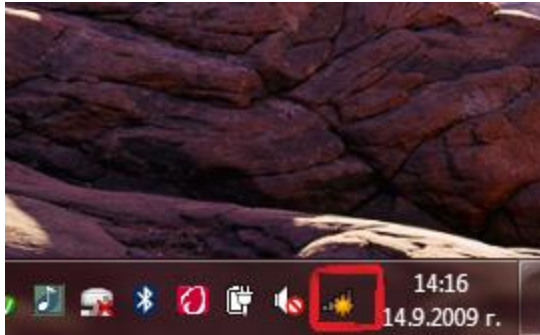


The certificate is now installed.

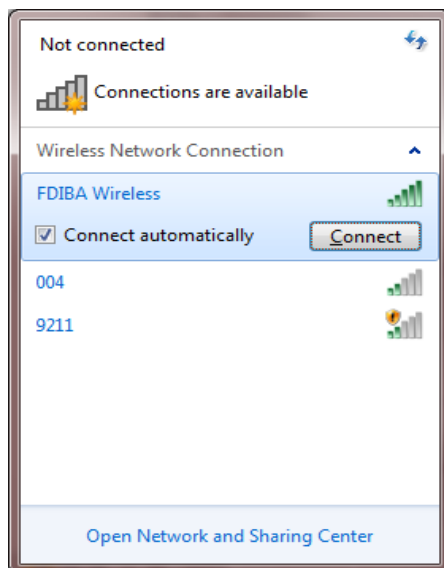


2) Connecting to the network

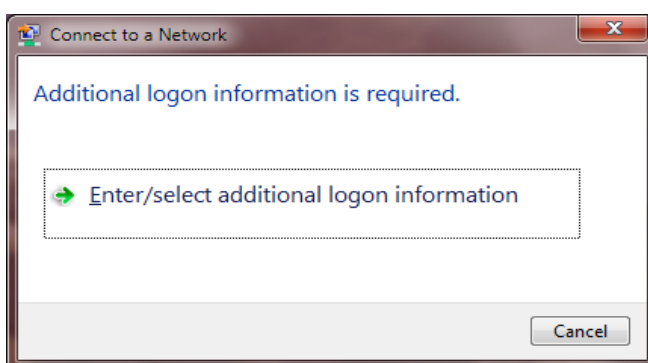
1. Click the network icon in the system notification area



2. From the list of available networks select **FDIBA Wireless** and click **Connect**. Optionally, select **Connect automatically**.

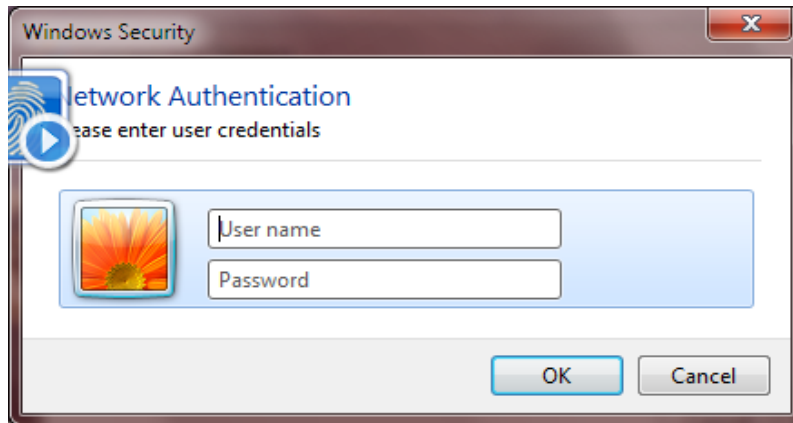


3. If the following window appears, click **Enter/select additional logon information**.

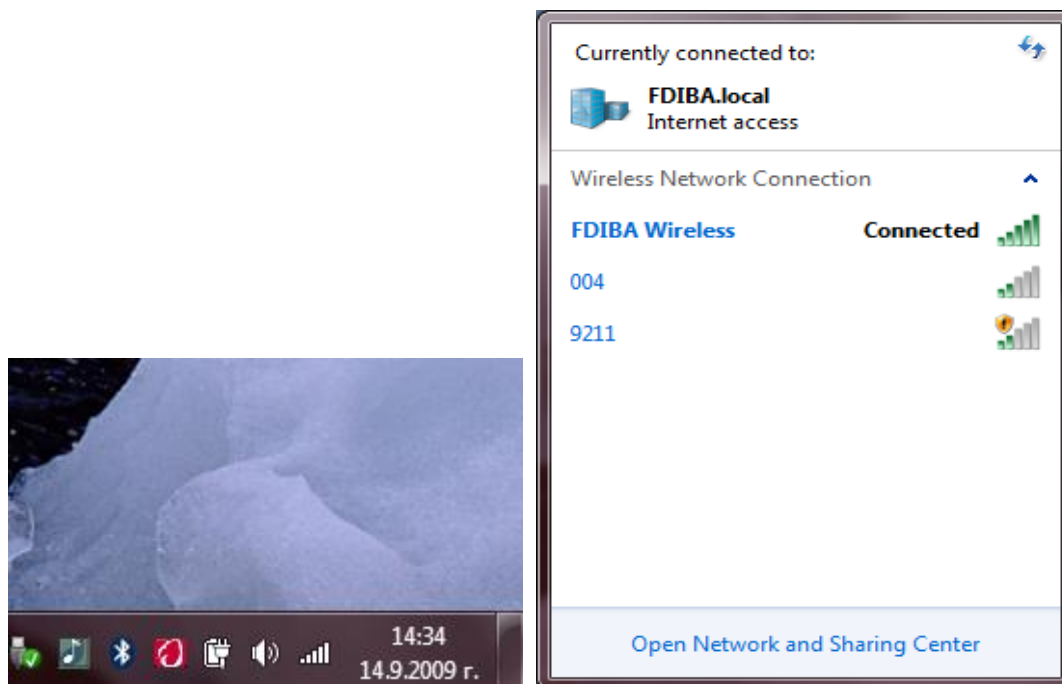




4. In the window **Windows Security** type your username (in the form **username@fdiba.local**) and password and click OK.



5. If the radio icon appears, you can now browse the Internet.



If you have any questions or problems connecting to the network, please contact the FDIBA IT Team (10207 – A) or e-mail itteam@fdiba.tu-sofia.bg.