



## Instructions for connecting to the FDIBA Wireless Network (Windows Vista)



In order to connect, you need your username and password, as well as the FDIBA Root Certificate which you need to install on your laptop or smartphone.

### **1) Root Certificate Installation**

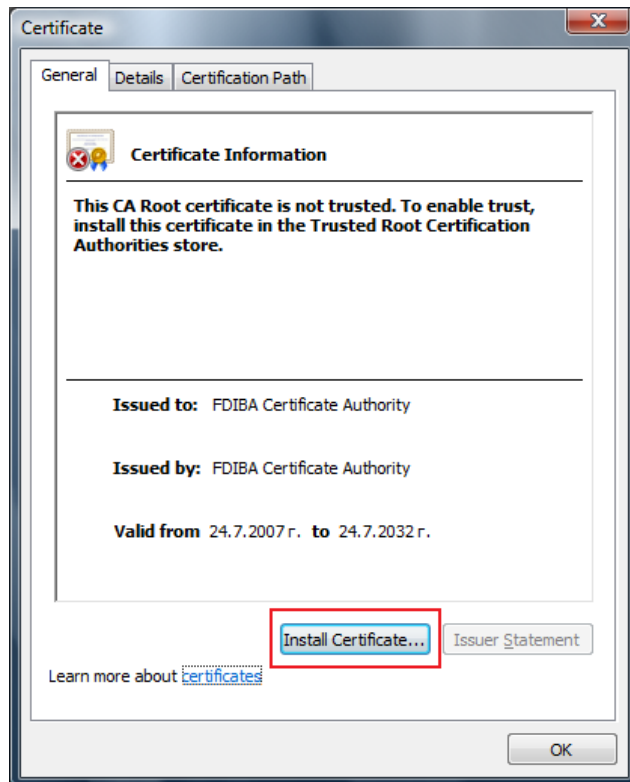
To obtain the certificate, please perform the following steps:

1. Log on to a desktop computer in one of the PC rooms using your username and password and use Windows Explorer to navigate to the location **X:\Wireless Network**.

Note: You can also download the certificate outside the FDIBA network using the URL: **<http://fdiba.tu-sofia.bg/downloads/FRC.cer>**

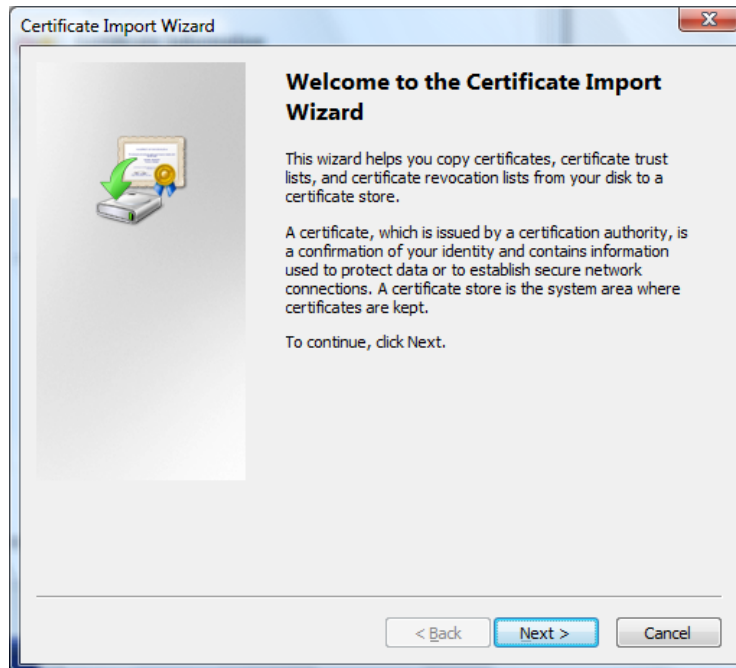


2. Copy the file **FRC.cer** to a USB Flash disk or a diskette.
3. Transfer the certificate file on your laptop or smartphone.
4. Double-click on the certificate file. You should see the following window:

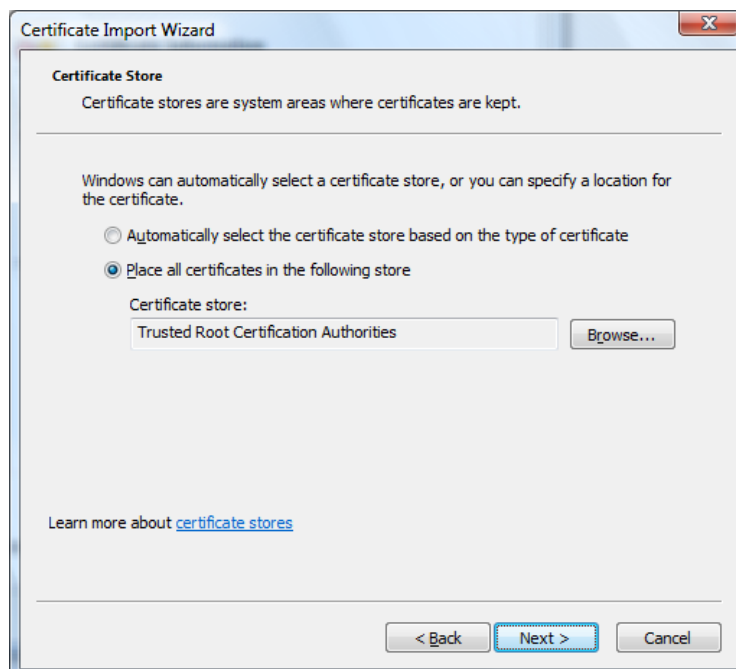


Click on **Install Certificate...**

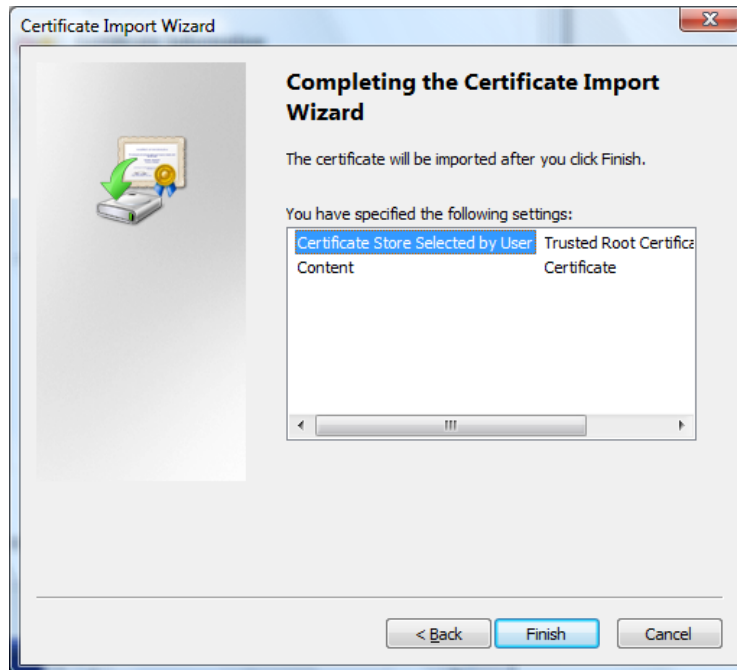
5. In the Certificate Import Wizard click **Next >**.



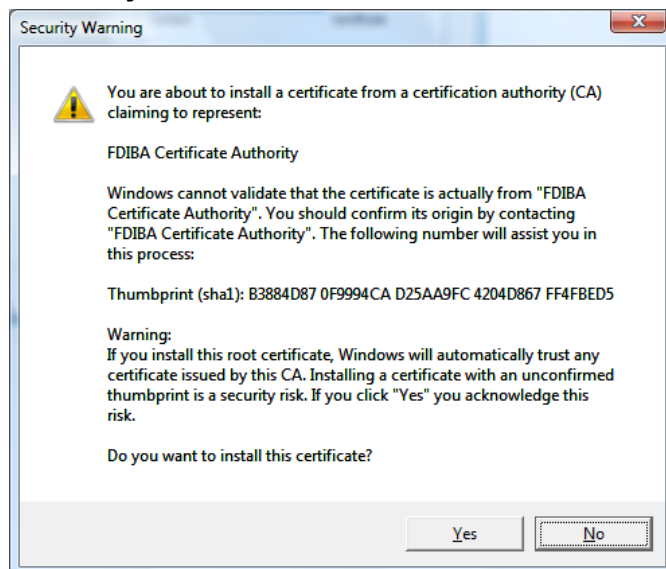
6. Select **Place all certificates in the following store**. Click **Browse...** and select **Trusted Root Certification Authorities**. Click **Next>**.



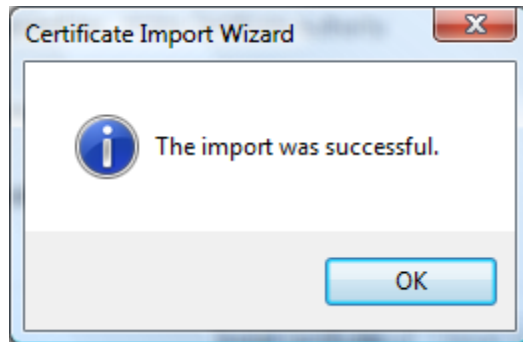
7. Click **Finish** to complete the Certificate Import Wizard.



8. Verify the certificate by comparing the Thumbprint (sha1) value in the **Security Window** with the value shown here. If they match, click **Yes**.



In the **Certificate Import Wizard** window click **OK**.

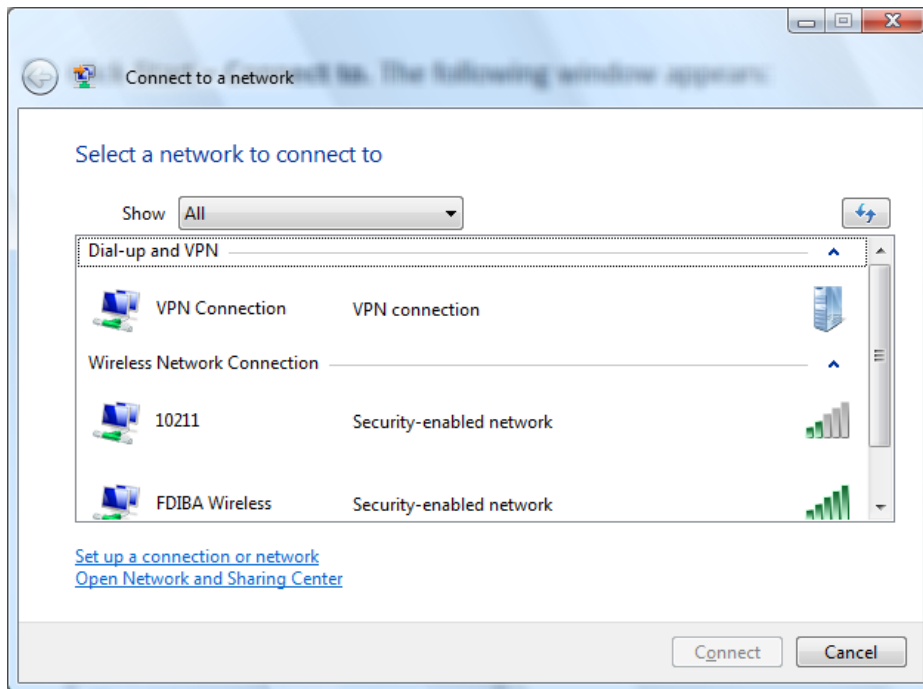


This window completes the certificate import procedure. Refer to the next page for Wireless Network Configuration.

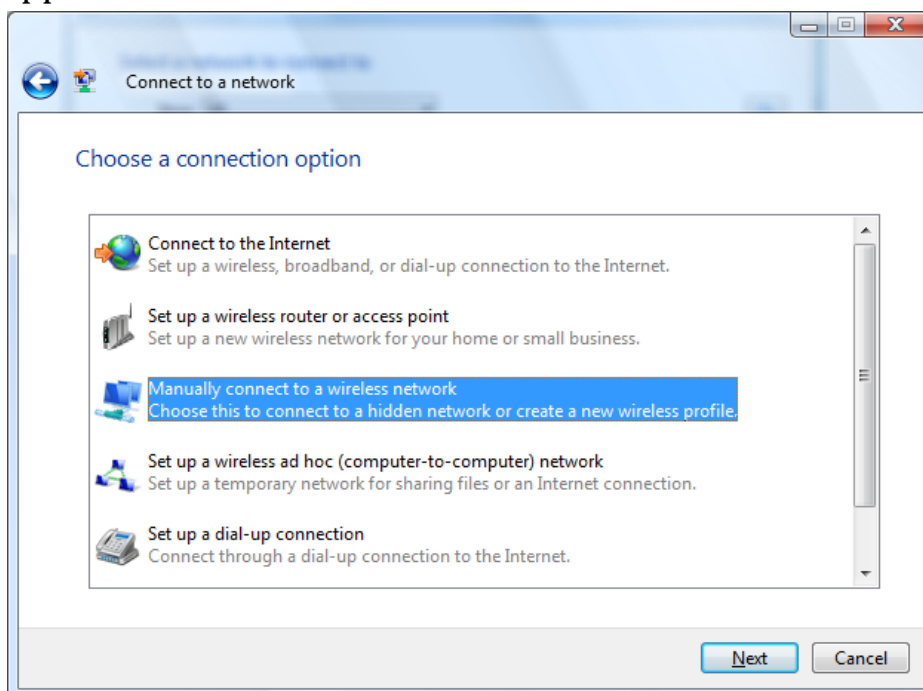


## Configuration of the Wireless Network Properties

1. Click **Start – Connect to**. The following window appears:



2. Click **Set up a connection or network**. The following window appears:





3. Select **Manually connect to a wireless network** and click **Next**.
4. In the **Manually connect to a wireless network** window enter the following information:

Network Name: **FDIBA Wireless**

Security type: **WPA-Enterprise** or **WPA2-Enterprise** (not WPA-Personal!)

Encryption type: **TKIP** or **AES**

Check the box next to **Start this connection automatically**. Click **Next**

Manually connect to a wireless network

Enter information for the wireless network you want to add

Network name: FDIBA Wireless

Security type: WPA-Enterprise

Encryption type: TKIP

Security Key/Passphrase:   Display characters

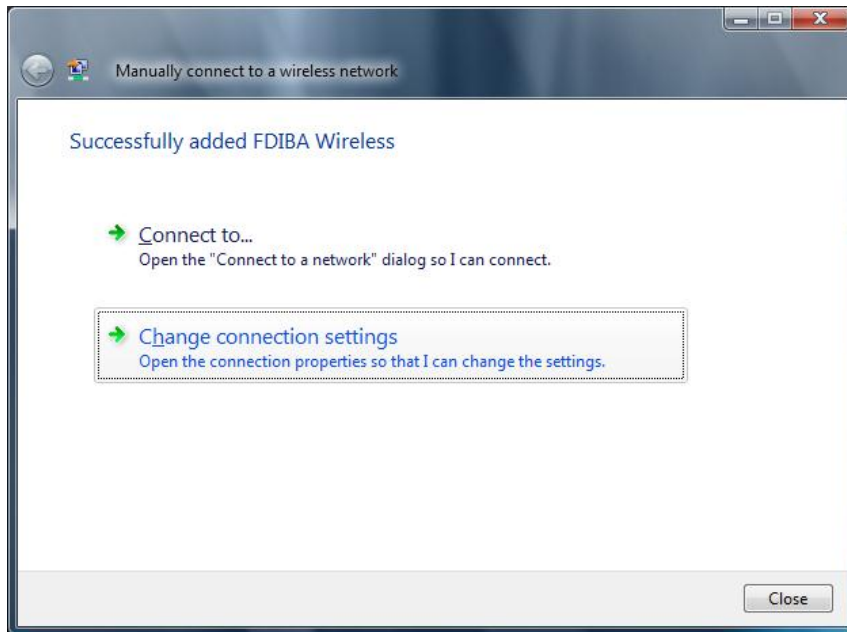
Start this connection automatically

Connect even if the network is not broadcasting

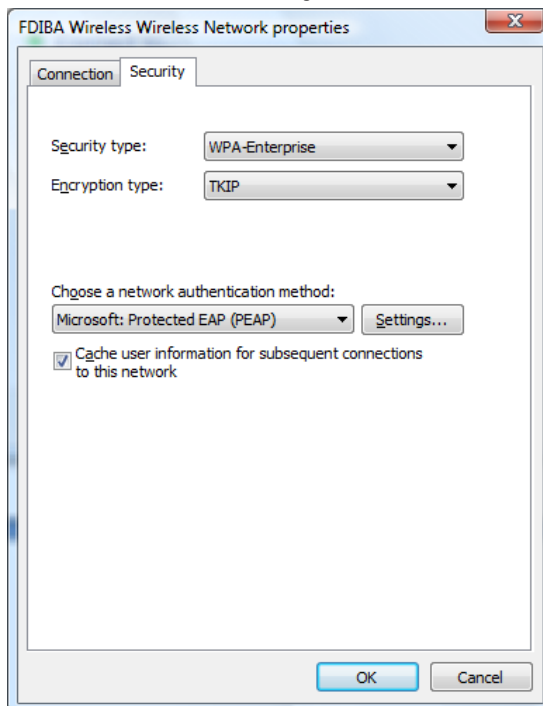
Warning: If you select this option, your computer's privacy might be at risk.

Next Cancel

5. In the following window select **Change connection settings**.

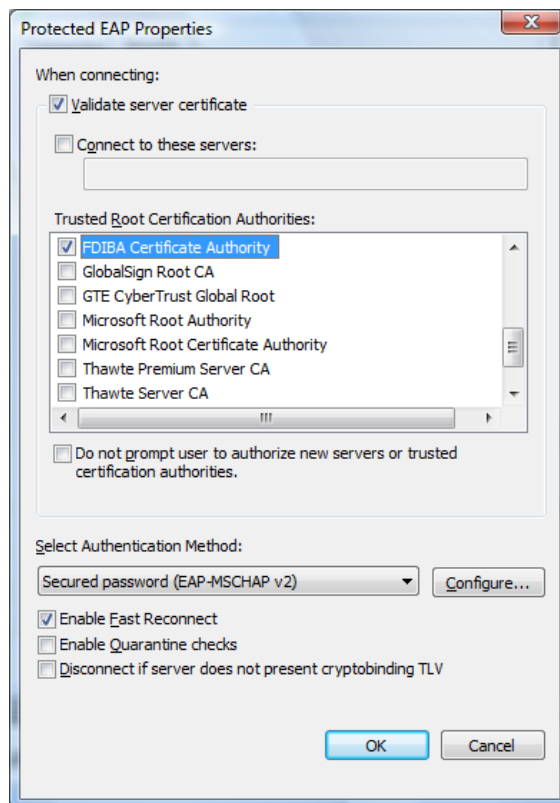


6. In the **FDIBA Wireless Wireless Network Properties** window choose the **Security** tab:



7. In the **Choose a network authentication method** drop-down menu choose **Microsoft: Protected EAP (PEAP)**. Click **Settings...**

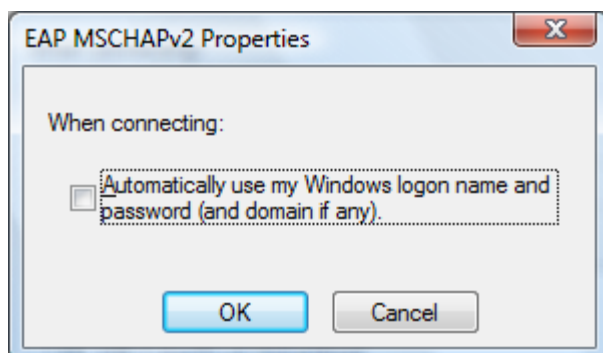




In the **Protected EAP Properties** window select the checkbox next to

**Validate server certificate**. From the **Trusted Root Certification Authorities** list scroll down and select the checkbox next to **FDIBA Certificate Authority**. In the **Select Authentication Method** drop-down menu select **Secured password (EAP-MSCHAP v2)**. Click **Configure...**

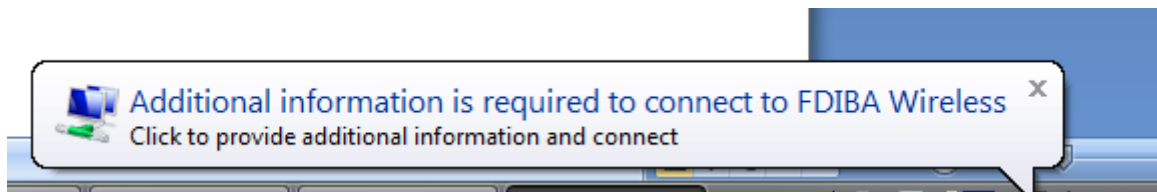
In the **EAP MSCHAPv2 Properties** window clear the check box next to **Automatically use my Windows logon name and password (and domain if any)**. Click **OK**.





You can optionally select the check box next to **Enable Fast Reconnect**.

8. In the **Protected EAP Properties** window click **OK**.
9. In the **FDIBA Wireless Wireless Network Properties** window click **OK**.
10. You will see a balloon message popping up from the system tray:



Click on the balloon message (Do not click the X in the upper right corner!).

The following window appears:



11. Enter your username and password. Enter **FDIBA** in the **Logon domain** field. Click **OK**. If nothing seems to be happening, click **Start-Connect to** and double click the **FDIBA Wireless** network. If the system prompts for credentials, enter them again. You have connected successfully if you see the following window:



---

If you have any questions or problems connecting to the network, please contact the FDIBA IT Team (10207 – A) or e-mail [itteam@fdiba.tu-sofia.bg](mailto:itteam@fdiba.tu-sofia.bg).